

# Rural Clinical Schools

## Achievements and Challenges

The logo consists of a horizontal rectangular box with a thick brown border and a lighter brown inner fill. The word "FRAME" is centered within the box in a large, black, serif font.

FRAME

Professor Jennene Greenhill – Chair FRAME

# Rural Clinical School of Western Australia



## Rural Clinical School of WA successes 2017:

- In Broome, Kununurra, Narrogin, Esperance, Albany, Busselton, Bunbury – RCSWA graduates are a very important part of workforce
- In Derby and Geraldton RCSWA graduates making a contribution to workforce
- Proposed new sites of Manjimup and Katanning – Graduates of RCSWA and associated programs will be key to running these sites.
- WACHS junior doctor programs (PGY 1-3) – majority are RCSWA graduates in all areas
- RCSWA has made very significant contribution to GP registrar training across WA
- P/T RCSWA employment assisting with retaining rural medical staff and also recruiting new medical staff



THE UNIVERSITY OF  
WESTERN AUSTRALIA



THE UNIVERSITY OF  
NOTRE DAME  
AUSTRALIA



# Most Outstanding Achievement:

- Commencing the full 6-year UNSW Medicine Degree from our Port Macquarie Campus this year with our first cohort of 17 students in Phase One

## UNSW Rural Clinical School

World Class  
Medical  
Education for  
Rural Australia



Never Stand Still

Medicine



UNSW  
AUSTRALIA

- Rural & Agricultural Health Seminar Series – all MD students
- RURAL LONGLOOK program – in rural towns (< 15,000 people)
- RURAL SHORTLOOK program - GP and rural Indigenous Health terms.
- YU LUKIM GUD – W. Province, PNG, rural Selective or Elective.
- RURAL RESEARCH – *all* rural students supervised for research

## Achievements & challenges:

- Comparative efficacy of A, B & C LIC at International CLIC Conf.
- Achieving RHMT grad targets after 2 years (1st contract) = 1 year early
- Expansion to 185 CSP (Intake 2017), then 200 CSP (Intake 2018)
- Opening Sunshine Coast Hinterland

Any questions?

Prof. Scott Kitchener, [s.kitchener@griffith.edu.au](mailto:s.kitchener@griffith.edu.au)

M: 0458476386





- Extended Rural Cohort has a good retention rate into Murray to the Mountains Intern Program
- Medical Education Research program reporting on rural educator peer review, community student mentoring program – novel ways to support rural educators and rural students
- High level of student satisfaction with accommodation and facilities support across all our campuses



## Successes

- 2017 is our 25<sup>th</sup> Anniversary
- Excellently positioned and positively engaged with Faculty
- School teaches 22% of the clinical cohort, plus first year grad entry students
- Monash course presents unique mix of medical students
- Improved relationships with our alumni

## Challenges

- Hubs
- Research outputs
- Growing the rural and indigenous entry into the course
- Alumni engagement



**University of Newcastle  
Department of Rural Health**



## IDENTIFYING SUCCESS

- Change in attitude of medical students. Rural is now very attractive with more students applying for placements, in some clinical years, than are available
- Strong conversion rates of students into PGY1 at rural hospitals. Of 15 JMO posts in Tamworth for 2017, 12 were previous RCS students
- Infrastructure of RCS is utilised heavily by local medical workforce ensuring that training is of the same standard as available in the metropolitan areas

## CHALLENGES

- Long term approach required. Clinicians must move to their place of work
- Service models must utilise local expertise rather than fly in, fly out models
- Social economic disadvantage requires a non market approach to services

## Achievements

- On track for targets
- AMC Visit
- Rural Hub funding
- Rural Health theme in MD
- Rural research program
  - Graduate outcomes
  - PHN programs
  - Rural community issues



## Challenges and Opportunities

- Rural Hub
  - Wagga Wagga and Griffith
  - Public and private
  - Working with UNSW
- Tracking graduates
- Over subscribed all sites.



# UQRCS 2016-2017

backdrop of change in all areas

**Key focus:** student experience and student safety

staff experience: create career progression opportunities

celebrate success: individuals & UQRCS

Community partnership

**Challenges:** space – clinical & student accommodation

“right people in the right place  
at the right time”



# School of Rural Health Dubbo & Orange: Achievements

## Students

- Rural students now 34% of U Syd CSP admissions
- 36.4% CSPs undertaking long term placements
- Offering some two year placements, preferencing ATSI students

## Collaborations

- WNSWLHD, PHN, RFDS, HETI & others
- SRH, UCRH Lismore & UDRH Broken Hill operating as an influential functional unit within U Syd Medical Faculty

## Research

- UCRH, UDRH & SRH delivering Rural Research Capacity Building Program (RRCBP) 2015-9 & SRH research capabilities workshops WNSWLHD
- 15 collaborative research projects involving SRH
- Academic GP registrar
- 36 rural student MD projects

## Tangible results

- > 50% PGY1s at Orange Health Service are U Syd alumni 2018
- Establishment of Rural Training Hub & ongoing development



# **Rural Clinical School Tasmania**

## **Achievement**

- Increased students
- Innovative teaching programmes - mental health where there is limited service
- Community engagement to enhance communication and teaching skills and encourage next gen.
- Supporting and developing adolescent mental health programmes through teaching in schools.
- Enhancing and developing and supporting allied health students in the rural area.
- Increased interns staying on
- Ex students coming back - meeting local health and service needs eg academic registrars palliative care registrars family planning and women's health
- This year.. Getting the Hubs up
- Successful bid and Accreditation for GP term- 5 positions

## **Challenges**

- Ageing workforce- Developing the next generation of rural teachers Developing students & teaching fellows.
- Rural research and getting a network for grants for novice / rural researchers.
- Increasing rural rural students- ( RA3-5)
- Recognition by the uni that we are a workforce programme



- Continued strong interest 43 applicants (from cohort of 90)
- Indigenous Health stream – voluntary innovative program of experiential learning, mentoring and leadership training in Aboriginal & Torres Strait Islander health in collaboration with local AMS, Winnunga Nimmityjah. Have had to cap numbers 2017
- Student academic success and positive graduate outcomes – 40-50% PGY6-9 working rurally
- SE NSW Training Hub – challenging the rural reluctance

Rural Clinical School

ANU Medical School





# UOW achievements

- Recruitment of high quality rural origin students – exceeding targets
- Embedding Indigenous health into the curriculum and providing cultural competence training for staff
- High quality longitudinal integrated placements for all students (70% rurally) with embedded student research projects relevant to their communities
- Outstanding student outcomes – in terms of both rural career choices and benchmarking (internal and external)

# UOW challenges

- Meeting objectives of RTH in a short timeframe
- Maintaining relationships with community
- Ensuring that rural and Indigenous health issues remain embedded in the curriculum
- Producing graduates who are work-ready and with the desire to give back to society



Medical education – ocean to outback



# Flinders University Rural Health SA

- **PRCC** (Parallel Rural Community Curriculum)
  - Rural Sub Quota Selection - 24 places
- **Limestone Coast Rural Hub**
  - Mount Gambier & Riverland
- **Aboriginal Lecturers appointed in each site**
- **Interprofessional simulation (IP-Sim) team & updated facilities**
- **FURHS visiting schools**
- **Advanced studies** Years1-4 projects
  - Rural Workforce
  - Clinical Courage
  - Diabetes models of care
  - Rural Integrated Mental Health services
  - School Based Mental Health Services
  - Social impact in rural communities
  - Obstetric retrievals



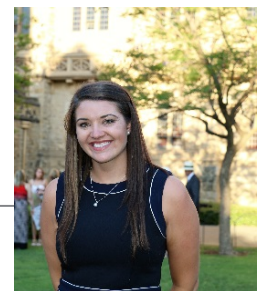
# Flinders NT

1. University structural changes
2. Major curriculum change – TBL, PAL
3. Increased allied health & nursing placements
4. Nursing & allied health pathways
5. NT remote generalist pathway
6. Regional training hubs
7. CAAHSC
8. CRANA+ Aurora Award
9. Australian Awards for University Teaching Citation

# Adelaide Rural Clinical School







- Academic success and oversubscription to LIC program
- Integrated pathway over years 4-6
- Establishment of Rural Training Hub in Whyalla
- Development of IRTP, intern placements and CHSA Training Medical Unit
- Successful collaborations in Broken Hill (Sydney Wollongong), Barossa Valley (Flinders) and Whyalla (UniSA)
- University wide approach to Indigenous recruitment
- 2016 Indigenous graduate Dr Claudia Paul awarded surgery scholarship at Harvard University








## ACHIEVEMENTS

### 2016

-  3,526 multidisciplinary placement weeks
-  54% graduate CSP medicine students spent >1 year in RA2-5 (excl. Townsville)
-  69% CSP Medical intake students of rural background
-  59 FTE academic and administration staff

### 2017

-  Expansion of multidisciplinary placements in remote locations
-  292 beds student accommodation
-  Regional Training Hubs – 5 sites, statewide partnership

## CHALLENGES



Aboriginal and Torres Strait Islander students



Rural origin for non-medicine disciplines



Increase in duration of placements



Rural Student Club – RHINO

Cairns  
Singapore  
Townsville

 JAMES COOK  
UNIVERSITY  
AUSTRALIA

# Deakin Medical School

## Achievements

- Student engagement with local community – PHM research poster
- Faculty-wide recognition of rural clinical placement opportunities
- Spread of rural research resources across all three clinical schools

## Challenges

- Clinic retention beyond initial terms
- Regional Training Hub
- Faculty engagement beyond 'metro'



# Western Sydney Rural

- 1 Establishment of strong Aboriginal health curriculum
- 2 Strengthening of Rural Placements

## ***Bathurst Clinical School***

1 Year Placement

## ***Lismore Clinical School***

1 Year Placement

## ***16 AMS Sites***

5 Week Placements

- 3 Rural presence and curriculum development  
From Year I-V  
Including strengthening research input and output

**WESTERN SYDNEY**  
UNIVERSITY

