



the future of rural health

# National Rural Health Student Network

- Provides a voice for students interested in improving health outcomes for rural and remote Australians
- Promotes rural health careers to students, with the aim of addressing the workforce shortage in rural Australia

# nrhsn *rural health clubs*

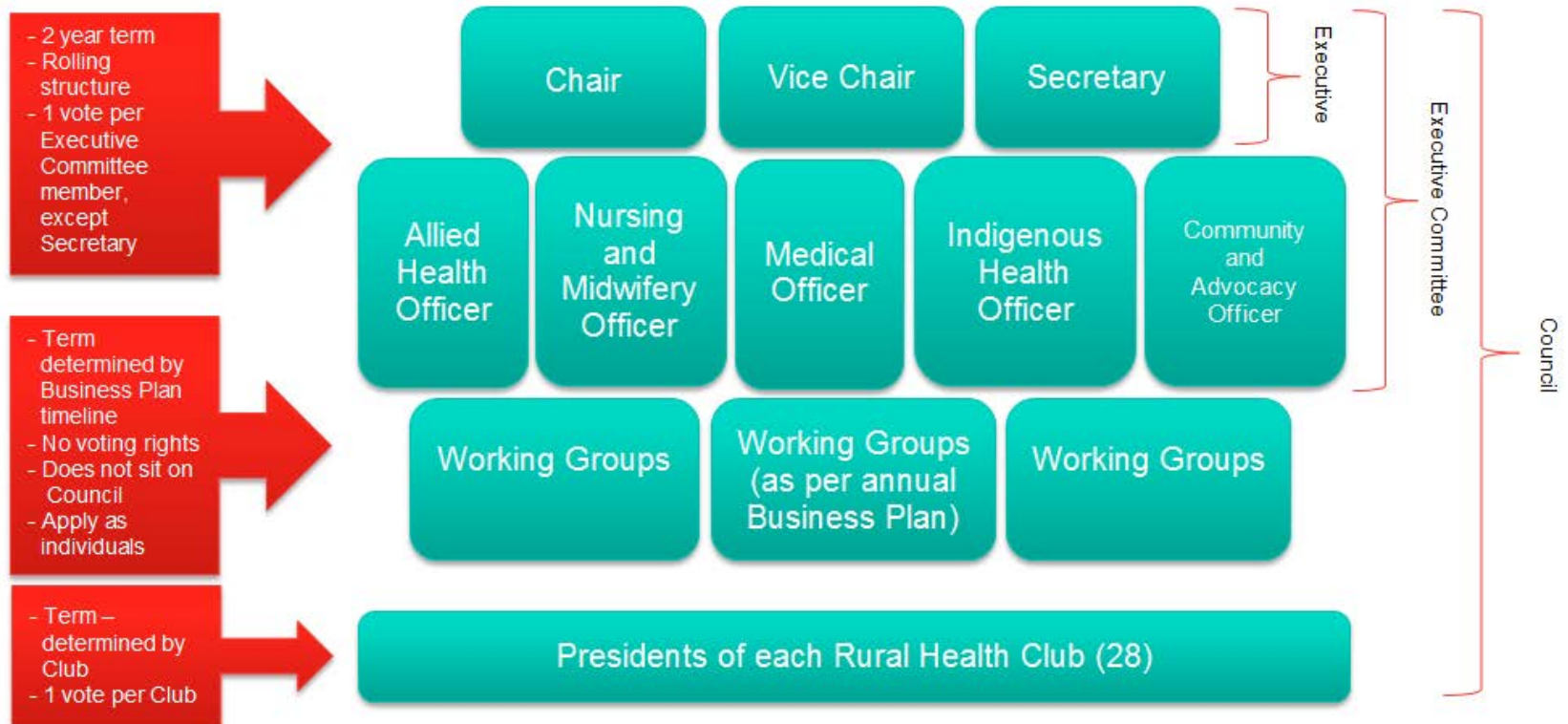
1. **ARMS**  
Australian National University, ACT
2. **AURHA**  
Adelaide University, SA
3. **BREAATHHE**  
University of Newcastle, NSW
4. **BUSHFIRE**  
Bond University, QLD
5. **CARAH**  
Charles Darwin University, NT  
in assoc with Flinders University, SA
6. **CRANC**  
University of Canberra, ACT
7. **FURHS**  
Flinders University, SA
8. **HOPE4HEALTH**  
Griffith University, QLD
9. **KRASH**  
Notre Dame University, Broome, WA
10. **LARHC**  
La Trobe University, Bendigo, VIC
11. **MARHS**  
Charles Sturt University, Albury, NSW  
including La Trobe University  
Wodonga, VIC
12. **MIRAGE**  
University of Sydney, NSW

13. **NERCHA**  
University of New England, NSW
14. **NOMAD**  
Deakin University, VIC
15. **OUTLOOK**  
University of Melbourne, VIC
16. **RAHMS**  
University of New South Wales, NSW
17. **RHINO**  
James Cook University, QLD
18. **RHUWS**  
University of Western Sydney, NSW
19. **ROUNDS**  
Notre Dame University, Sydney, NSW
20. **ROUSTAH**  
University of South Australia, SA
21. **RUSTICA**  
University of Tasmania, TAS
22. **SHARP**  
University of Wollongong, NSW
23. **SPINRPHEX**  
Combined Universities  
of Western Australia, WA
24. **StARRH**  
Charles Darwin University, NT  
including Flinders University, NT

25. **TROHPIQ**  
University of Queensland, QLD
26. **WAALHIIBE**  
Combined Universities of Western Australia, WA
27. **WARRIAHS**  
Charles Sturt University, Wagga Wagga, NSW
28. **WILDFIRE**  
Monash University, VIC



## NRHSN 2017 Executive



## NRHSN 2017 Executive



William Moorhead  
Chair  
(University of QLD)



Ben Dodds  
Vice-Chair  
(University of Tasmania)



Carolyn Reimann  
Secretary  
(James Cook University)

[executivecommittee@nrhsn.org.au](mailto:executivecommittee@nrhsn.org.au)



## NRHSN 2017 Officers



Molly  
Allied Health Officer  
(Curtin University)



Digby  
Medical Officer  
(University of NSW)



Danni-Lee  
Nursing Officer  
(Notre Dame)



Dylan  
Community and  
Advocacy Officer  
(Charles Sturt  
University)



Kelly  
Indigenous Officer  
(University of WA)

[executivecommittee@nrhsn.org.au](mailto:executivecommittee@nrhsn.org.au)

## NRHSN Activities – Developing Rural Professionals

- Rural health publications and resources
- Club support
- Advocacy
- Alumni



# Rural Health Clubs

- 28 Rural Health Clubs in every state/territory
- ‘Boots on the ground’ for the NRHSN’s Priority Areas
- Work closely with University Departments of Rural Health and Rural Workforce Agencies





# Priority Areas



- Positive, clear and supported rural training pathways
- Aboriginal and Torres Strait Islander Health
- Mental health training and awareness for all university students
- Health outcomes for rural and remote Australians

# Current NRHSN Position

- The NRHSN ~~advocates~~ **Papers** nationally through  
Position Papers
  - Bonded Schemes Position Paper
  - Indigenous Health Position Paper
  - Nurse Practitioners Position Paper
  - Inter Professional Education (IPE) Position Paper
  - Extended scope of practice Position Paper
  - Quality Indigenous Health Curriculum Position Paper

# Positive rural training pathways

- Multidisciplinary rural training guide
- National Rural Health Stakeholder Meeting
  - Dr Hon David Gillespie MP
- Royal Australian College of Surgeons (RACS) Provincial Surgeons conference address
- Rural placements guides

# Aboriginal and Torres Strait Islander Health

- Position paper updated
- Aboriginal & Torres Strait Islander community engagement activity



# Mental health

- Mental health position paper
- When the cowpat hits the windmill publication



# Rural health outcomes

- Placement research
- Rural High School Visits (RHSV)
- Climate change position paper
- Marriage equality stance



# Effective rural placements

A national study of experiences amongst  
multidisciplinary health students

# Method

Online survey



Sent to NRHSN database



**897**  
responses

- 542 medicine students
- 355 non-medicine students
- 565 had undertaken a rural placement



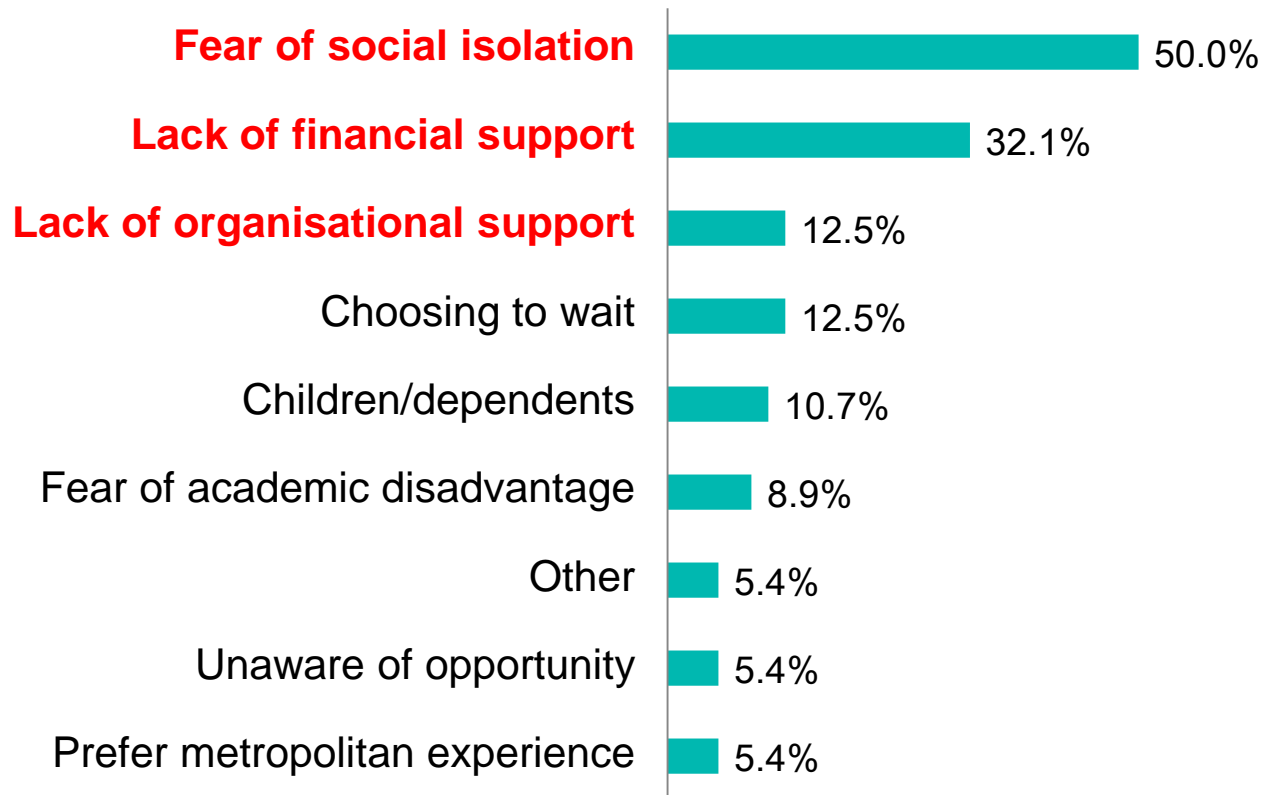
Survey questions

- Demographics
- Degree details
- Attitudes and barriers to rural placements
- Details of most recent rural placement

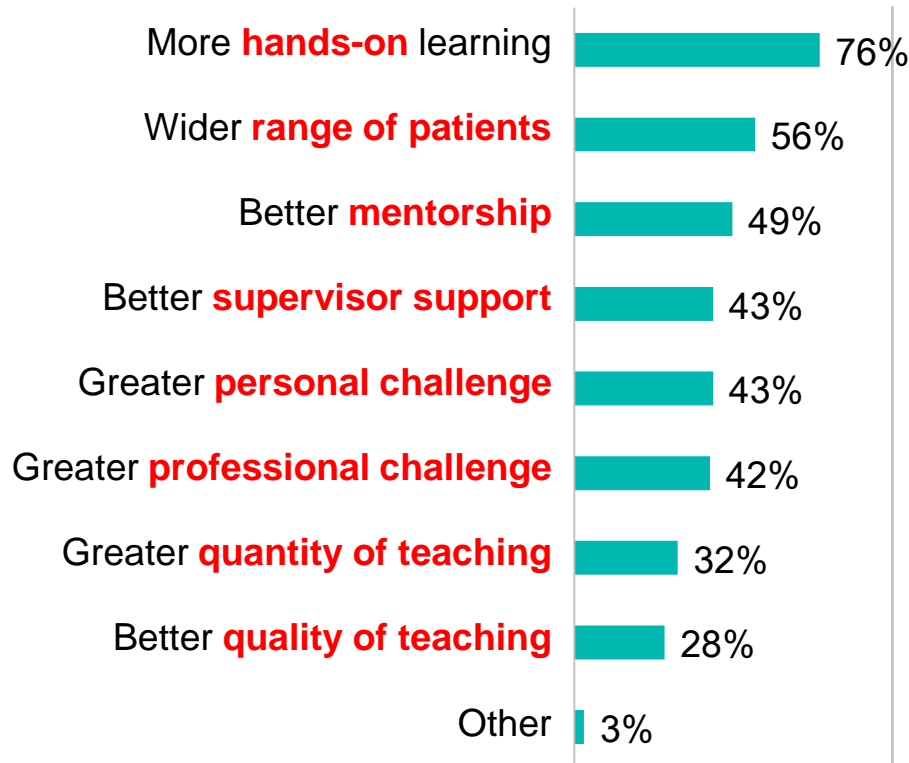




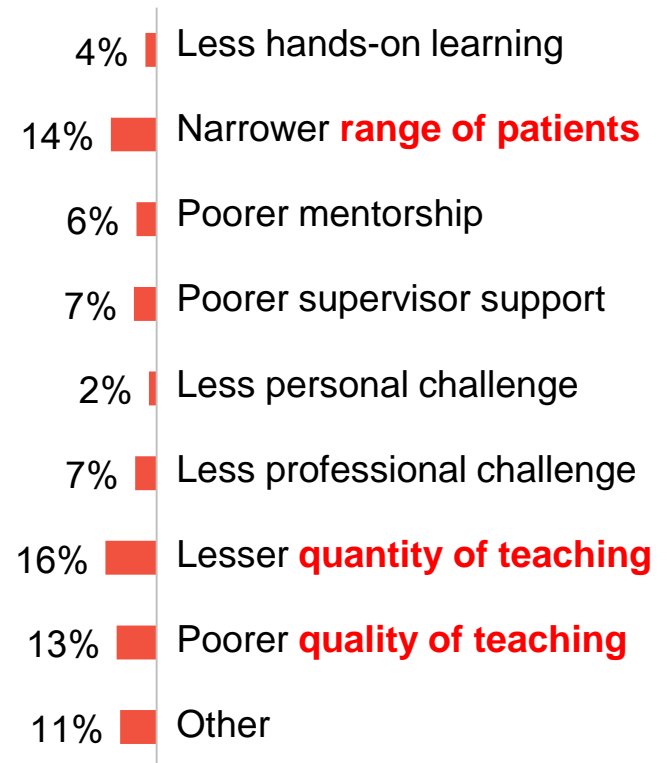
## Barriers to rural placements



## Pros



## Cons



## Costs

On average:

- Non-medicine students paid an additional \$55/week for accommodation ( $p < 0.001$ )
- Non-medicine students incurred an additional \$563 in total costs ( $p < 0.001$ )

## Conclusions

1. >90% of students desired rural placements
2. >50% saw rural placements as academically advantageous
3. Lack of social, financial and organisational support prevented rural placement uptake
4. Non-medicine students received less support in all domains, including those identified in point 3
5. 62% of placements increased rural practice intent
6. The impact on future intent depends on the experiences had whilst on placement, not the level of support provided



# Conference presentations

- WONCA World Rural Health Conference
  - Aboriginal and Torres Strait Island university health curriculum
  - Role of leadership in rural health
- National Rural Health Conference
  - Effective rural placements
- RACS Provincial College Conference
  - Student perspective on rural specialty training
- RMA
- CRANAPlus

# Advocacy meetings

- Department of Health
- Rural Health Roundtable
  - June
  - November
- Health workforce agency network
  - JFPP
- Federal Budget lock in
- National Rural Health Alliance

# New Funding

- 3 years
- Funding support through RHMT Program
- \$12,000/year for each Rural Health Club
  - 2 x Rural High School Visit
  - Indigenous Community Engagement activity

# New Administrators

- NRHSN National Executive
- Tender process in place
- From 1 January 2018
  
- Rural Health Clubs
- Universities
- From June 2017



# Negatives

- Unfamiliar university contact
- Funding confusion
- Loss of external administrator support
- Reduced autonomy of clubs

# Positives

- Increased collaboration with university
- Increased awareness of clubs
- Funding tied to RHMT, goals aligned

# Rural Health Multidisciplinary Training Program

- Effective rural training experiences
- Evidence base for rural training strategies
- Supporting Aboriginal and Torres Strait Islander health
- Increasing number of rural original health students
- Well supported academic networks to enhance delivery of training to students

# RHC highlights





# RHC highlights





# RHC highlights



the fa



# RHC highlights



# RHC highlights





# RHC highlights





# RHC highlights



*the future of rural health*

[www.nrhsn.org.au](http://www.nrhsn.org.au)



# RHC highlights





# RHC highlights



# RHC highlights





# RHC highlights





# RHC highlights





# RHC highlights



# RHC highlights



<https://youtu.be/PSq4RnvZnzQ?t=84>



## NRHSN Contact Details

c/- Rural Health Workforce Australia  
Suite 2, Level 5  
10 Queens Rd  
Melbourne Vic 3004

Ph: 03 9860 4700  
[executivecommittee@nrhsn.org.au](mailto:executivecommittee@nrhsn.org.au)  
[www.nrhsn.org.au](http://www.nrhsn.org.au)