



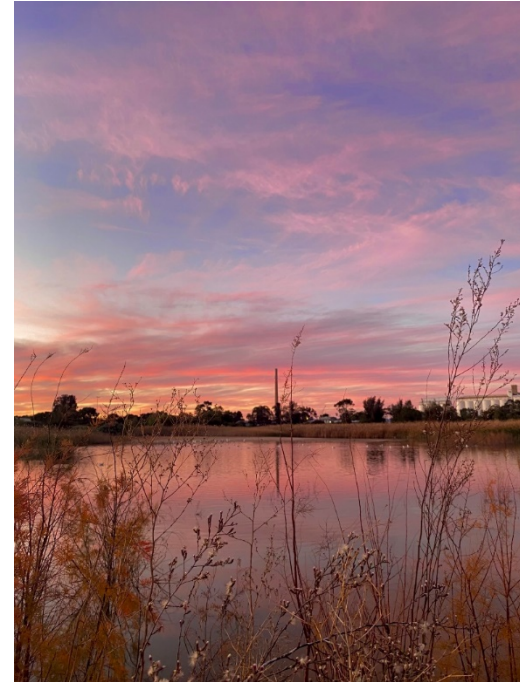
**FRAME**

FEDERATION OF RURAL AUSTRALIAN MEDICAL EDUCATORS

# 1. UNIVERSITY OF ADELAIDE

## Planning for the new contract -RHMT

- Enhance rural medical student work-based assessments to reduce reliance on end of year exams
- Focus research agenda on understanding mechanisms for workforce outcomes and community-driven projects



# Adelaide Rural Clinical School

## Planning for the new contract - RHMT

- Increase integration between rural clinical school A-team and Yajita Paruna (faculty unit) to strengthen support for Aboriginal and Torres Strait Islander students
- Pilot rural pre-clinical training with 8 week placement in Port Augusta including local two-way governance



# Adelaide Rural Clinical School

## Planning for the new contract - RTH

- Continue to improve rural student and junior doctor selection, mentoring and career guidance in partnership with SA Health
- Work to support Local Hospital Networks in our footprint to take on further responsibility for rural junior doctor training.



## **2. AUSTRALIAN NATIONAL UNIVERSITY**

# Planning for the new contract

## ANU Rural Clinical School



## Moving on and out - Education

- Increased numbers in Rural Stream 2022
- New opportunities in western NSW and NT for Rural Stream and Indigenous Health stream student placements
- Increased students and length of time in Bega and Goulburn and Moruya year 3 and 4-increased disciplines
- Consolidation and expansion rural PrINT terms

## Infrastructure and staffing

- CTF and office accommodation Bega, Cooma and Goulburn (mid 2022)
- Staff restructuring- positions now located in Bega or Goulburn– Hub (=1.2 FTE); RCS senior education coordinators (=1.2 FTE), research assistant (0.6) . A Recruitment of Head 2022

## South East NSW Training Hub

- **Creating opportunities**
  - Workforce Planning Tool implementation
  - Increasing regional PGY1 positions –duration and number
  - GP training - staying in the region
- **Student /JMO engagement**
  - Career Planning for final year students and JMOs
  - Support more clinicians and expanded education and training delivery for junior doctors
  - Increase rural training opportunities
- **Collaborations**
  - Continuing to build relationships with stakeholders
  - RJDTIF funded places -Cooma
  - Psychiatry training opportunities in SENSW



### **3. DEAKIN**

## Boosting Rural Training

- Rural Training Stream
  - ❖ Dedicated to rural background
  - ❖ Continuous rural training
- Earlier rural connection
  - ❖ Year 1 student visits
  - ❖ Clinical school allocation
  - ❖ Expanded TCP (including indigenous health connection)

## Indigenous health

- New lecturer role (consolidate teaching from pre-clinical years)
- Indigenous health placements
  - ❖ ACCHO GP clinic
- Increased interaction with ALO
  - ❖ Communication skills training
  - ❖ Contact with community (Elders yarning, etc.)
- Boost regional teaching
  - ❖ Clinical liaisons- small rural hospitals
  - ❖ Expanded student placements

## **Trainee support**

- ❖ Mentoring (DrJuMP)
- ❖ Website
- ❖ Tours
- ❖ Education

## **Pathway development**

- ❖ Emergency Medicine
- ❖ Mental health
- ❖ Intensive care
- ❖ Ophthalmology

## **Project officer**

- ❖ Liaise with partners
- ❖ Identify potential training posts

## 4. FLINDERS (SA)



Flinders  
UNIVERSITY



# Education & Research

- Rural Stream Evaluation & Quality Improvement Plan
- Cross University R&R working group – integrated and strategic Education, Research & Community Engagement
- 5-year tracking study of Flinders Graduates is on-going with APHRA data being collected for the years 2017, 2019, 2020

# Aboriginal Health

- Pathways into Health Professions Education and meaningful exit points
- Increase number of student placements in Aboriginal Health services
- Increase in Mentor and Leadership demonstration programs
- Increase in Aboriginal student support scholarships



# Regional Training Hub

- Increased Joint appointments with Local Health Networks (LHNs) = increased workforce/industry partnership/opportunities
- R&R transition to practice collaborations with LHNs
- Accreditation support to increase trainee positions

AMBITIOUS

Thank you

Questions/Discussion



INSPIRING



**Flinders**  
UNIVERSITY

STAY  
UPDATED



[flinders.edu.au](https://flinders.edu.au)



[@flinders](https://twitter.com/flinders)



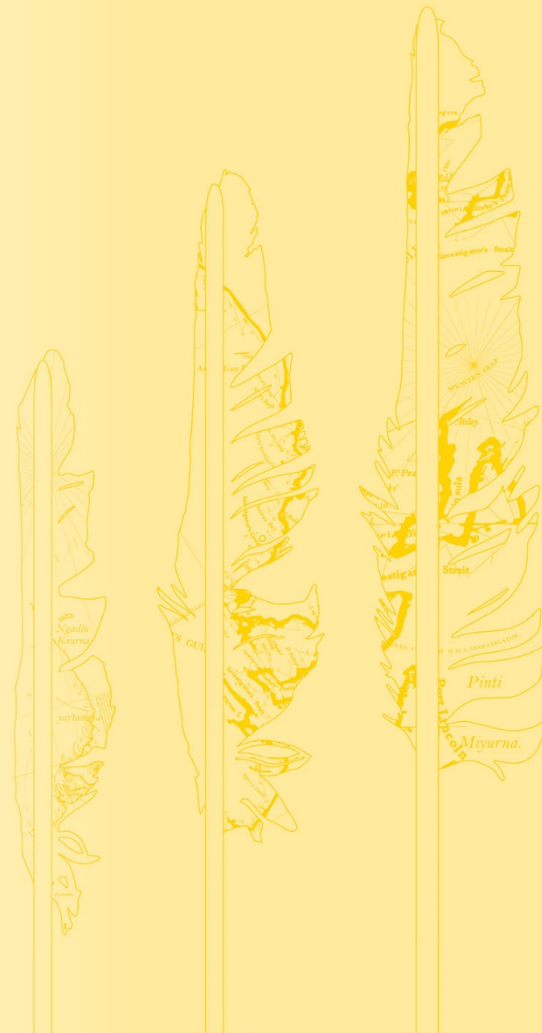
[@flindersuniversity](https://www.instagram.com/flindersuniversity)



[/flindersuniversity](https://www.facebook.com/flindersuniversity)



[flindersuniversity](https://www.youtube.com/flindersuniversity)



## 5. FLINDERS (NT)





# Flinders NT Medical Program

- Local delivery curriculum
- Meeting workforce needs with education
- Diverse cultures
- Partnerships – esp. cultural
- Infrastructure in poorly resourced communities



# Planning for the New Contract

- More students studying locally each year
  - More local graduates per year
  - More Aboriginal and/or Torres Strait Islander students and graduates
  - Expand clinical placements into smaller, more remote communities
- Expand opportunities for specialist training, primarily based in the NT



# Flinders NT Regional Training Hub

- Continue and enhance workforce stakeholder collaboration- “NT Medical Training & Workforce Collaboration”
- Development of acute care specialist and rural generalist training capacity through collaboration with health services and Aboriginal Community Controlled Medical Services
- 2022 Mentorship Program-12mth program, 6x4hr workshops with social functions
- Remote and Rural Hospital Specialist Training Pathways for Australia- proposing a framework
- Supervisor training
- Cultural capability programs



## 6. GRIFFITH

# Griffith University



## **7. JAMES COOK UNIVERSITY**

# A new RHMT Contract

BAU (Business as Usual)

Tania Torrisi, Andrea Muller, Tarun Sen Gupta



20 weeks rural for all students (years 2-4-6)



3928 weeks of rural placements

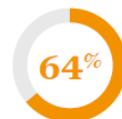
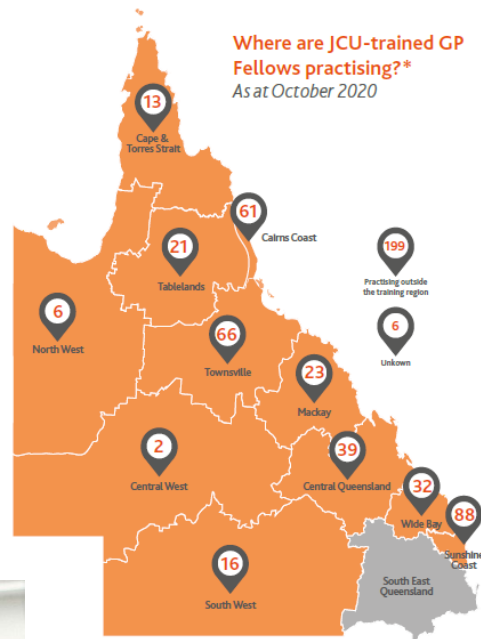


26 rural/remote locations + 17 for MBBS2



27,496 nights of accommodation

*Experience has no substitute!*



Retention of GP Fellows in  
JCU training region  
(total 368)



GP Fellows practising in  
regional, rural and remote  
Australia  
(MMM 2-7)

\*Total number of Fellows 576 as of October 2020. Practise locations  
taken from AHPRA data at 1 October 2020

# Current Publications

Rural and Remote Health



## Original Research

A return-on-investment analysis of impacts on James Cook University medical students and rural workforce resulting from participation in extended rural placements

Woolley T, Sen Gupta T, Stewart RA, Hollins A.

Accepted 12 August 2021 Australasia

ROI on extended rural placements factor of 7.80



## Original Research

Mid-career graduate practice outcomes of the James Cook University medical school: key insights from the first 20 years

Woolley T, Sen Gupta T, Paton K.

Accepted 10 September 2021 Australasia

... by PGY 5-14 one-third of all graduates were working in regional locations, 14% rural and 3% remote



## Consolidation of Conjoint Positions

- Academic Registrars
- Deputy Directors of Clinical Training
- Clinical Leads
- Well supported academic networks across the NQ region

## RTH Evaluation Project

- Four years on, evaluate the flow-on benefit of rural clinical placements and training and the increase in training capacity in rural and remote areas.
- Continue to assess training experiences: identify gaps, strengths, what attracts trainees to the region; Intern Preferencing

## Focus on “Flipping the Model”

- Identified Specialty Champions in the region to advocate for change
- Flipping the Specialty Training Models to ensure majority of training occurring in the region, with short rotations to metro
- Continue to advocate for changes to selection into entry and accreditation standards which disadvantage rural and remote training

## Continuing Collaboration

- Medical Education is a team sport
- Continue to facilitate Supervision and Leadership Workshops to develop supervision capacity
- Career Counselling and mentoring
- Promote quality training experiences and selection into entry of specialty colleges from trainees in regional and remote

## **8. UNIVERSITY OF MELBOURNE**



# University of Melbourne Rural Clinical School

## Lots going on!!

- Coping well with COVID-19
  - Shepparton campus was Tier 1 site in the Shepparton lockdown
  - new MD1 accommodation and teaching facilities (construction site)
  - amendments to assessment schedules
  - supporting student health and wellbeing
- Melbourne MD curriculum – curriculum revision ongoing with MD1 year new curriculum from 2022
- Rural Pathway of MD commencing 2022 in Shepparton – new team, new building, new curriculum
- Introduction of Discovery Modules in the MD curriculum with a new Rural Health Discovery Subject
- New challenges all lead to new opportunities for the Rural Clinical School



Goulburn Valley  
Regional Training Hub

# Our focus for the next 3 years

Echuca, Shepparton and Wangaratta in Victoria.

## *Supporting regional health workforce development.*

- Recruitment support
- Highlighting 'good news' stories in the industry regionally.
- Supporting further training accreditation positions in the region
- Improving access to skill based training locally
- Developing local education delivery skills
- 'Train the trainer'
- Showcasing, leveraging and developing the expert talent available in the region

## *Providing access to work ready skills.*

- CV writing and interview techniques
- Introduction and Advanced Supervision training
- Career forums with regionally based doctors
- In hospital training sessions during protected training time

*Working as an active alliance member on key state-wide initiatives.*

## *Strengthening connection to community.*

- Education and Networking events
- Community events
- Participation in local area career development and regional showcase initiatives



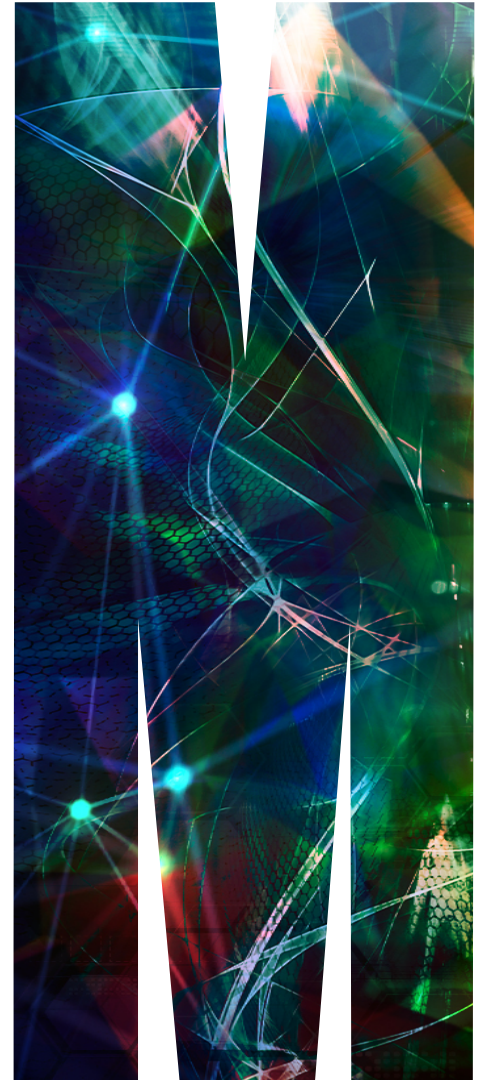
## 9. MONASH UNIVERSITY

# MONASH RURAL HEALTH

FRAME Update

Tuesday 28<sup>th</sup> September 2021

ZOOM



# LATEST INITIATIVE

## FEDERATION UNIVERSITY-MONASH UNIVERSITY PATHWAY INTO MEDICINE

- An opportunity for Gippsland origin students to complete their biomedical science course feeder program while living in Gippsland.
- Course is a modified Federation University Biomedical Science program.
- One unit per semester is a Monash biomedical science unit:
  - Hybrid program



MONASH  
University



Federation  
University



# LATEST INITIATIVE

## FEDERATION UNIVERSITY-MONASH UNIVERSITY PATHWAY INTO MEDICINE

- MRH Churchill site is co-located on Federation University's Gippsland campus.
- Students will be mentored by, and interact with, Monash medical students who are in their pre-clinical year.
- Students maintain WAM above 70 to be eligible for selection.



MONASH  
University



Federation  
University



# PREPARING FOR AN IMPACTFUL FUTURE:

## FOCUSING OUR WORK & SUPPORTING RURAL PROFESSIONAL OPPORTUNITIES

### DRIVERS conference

Doctors for Regional Innovation,  
Excellence, Research & Scholarship

Rural résumé bursary boost program  
Research support & publication funds  
Supervisor professional development  
CV & Interview Skills for students & JMOs

Emerging leaders program  
Clinical education pathway  
Variety of mentoring programs  
Other rural education programs

Aspirational events & activities: podcasts, retreats, tours  
Tailored engagement & support for students



Strongly collaborative  
& networked with  
sector stakeholders

### Clinical champions across health services (x5) & disciplines

(Paediatrics, Anaesthetics, Emergency Medicine, Surgery)

Understand & **overcome barriers** to regional training

Work with health services,  
Colleges & Government  
NB: Hub Director on Victorian  
**Medical Workforce Planning  
Advisory Group**

**Victorian Regional  
Paediatric Pathway**  
First 18 (of 36) months  
completed regionally  
= **Template**

Other coordinated **pathways in progress**  
(Emergency Medicine, Anaesthetics,  
Surgery, General Medicine, Psychiatry)